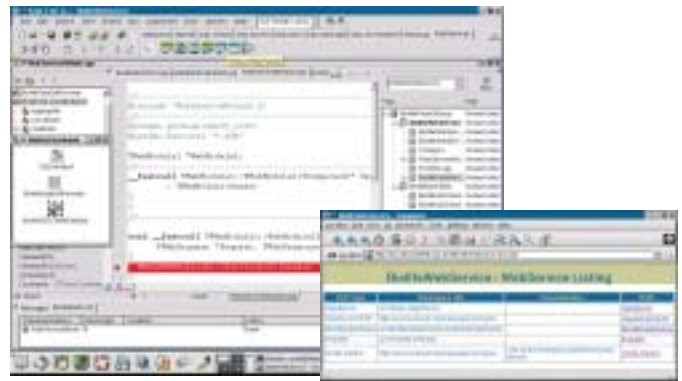


Borland® Kylix™ is the leading IDE for building high-performance

ACCELERATE YOUR PRODUCTIVITY

C++ and Delphi™ language applications on the Linux® platform

Borland® Kylix™ 3 is the leading IDE for building high-performance C++ and Delphi™ language database, GUI, Web, and Web Services applications on the Linux® platform. Combine Kylix with Borland C++Builder™ or Delphi to create single-source, cross-platform Linux/Windows® applications. With a comprehensive palette of customizable and extendable pre-built Borland Component Library for Cross-platform (CLX™) components, build high-performance applications more rapidly. BizSnap™ expands the capabilities of Linux and Apache™ with SOAP Web Services technologies that seamlessly interoperate with other platforms, languages, and Web Services. WebSnap™ transforms Apache Web servers into enterprise-class, database-driven Web application servers. DataSnap™ delivers unlimited royalty-free middleware for creating multi-tier enterprise-class database solutions.



Leverage new and existing C/C++ source code and programming skills. Build high-performance applications using component-based development more rapidly. Import Web Services and add them to your application functionality more easily.

FEATURES AND BENEFITS

Exercise the freedom to choose: use C/C++ or Delphi languages

Borland Kylix Enterprise provides both ANSI/ISO C++ and Delphi language programming – two powerful object-oriented languages in one development solution! By supporting real ANSI/ISO C++ standards, Kylix enables you to leverage new and existing C++ source code and programming skills. Both the C/C++ and Delphi integrated compilers are high-performance native code compilers that significantly reduce build times and create small, tight, and robust executable files for faster and more efficient solutions for the Linux platform.

Get the tools you need to deliver GUI, database, Web, and Web Services applications quickly and easily

Develop applications faster with real rapid visual development. Kylix seamlessly integrates application design and development, enabling you to create sophisticated Linux applications faster and more reliably than with other visual development tools. Quickly move from prototype to production with a unique combination of integrated features.

Get solutions to market faster with Borland CLX component-based development

Using the power of component-based development with Borland CLX technology, build reliable, high-performance applications more rapidly.

CLX delivers an extensive palette of hundreds of reusable, customizable, and extendable pre-built components and classes, designed for rapidly building applications with C++ or Delphi language programming.

Leverage the power of cross-platform development

Use Kylix to build native applications for Linux that can be easily recompiled and delivered on the Windows platform for improved application marketability and availability. Applications and Web Services written in Kylix can be ported to the Windows platform by compiling with Borland C++Builder 6 Studio, Delphi 6, or Delphi 7 Studio, offering a potentially significant increased return on investment.

Deliver business-to-business integration with Web Services using BizSnap

BizSnap expands the capabilities of the Linux operating system and the Apache Web Server with e-business XML and Web Services capabilities. By design, the Kylix BizSnap Web Services development platform simplifies business-to-business integration by easily creating XML/SOAP Web Services and connections that tightly integrate your business with the applications of your customers and suppliers.

BORLAND® KYLIX™ 3 ENTERPRISE

World Class RAD development for Linux®

Included IDEs supporting both Delphi™ and ANSI/ISO C++ languages (Open, Pro, and Ent)

32-bit optimizing C/C++ native-code compiler (Open, Pro, and Ent)

Inline assembly support for Intel® Pentium® 4 (Open, Pro, and Ent)

Borland CLX™ (Component Library for Cross-platform) native components for Rapid Application Development (Open, Pro, and Ent)

Web, database, XML, and Web Services development

Import and use W3C-compliant Web Services using XML, SOAP, WSDL, and more (Pro, and Ent)

Build W3C-compliant Web Services using XML, SOAP, WSDL, and more (Ent)

Native XML bindings radically simplify XML programming—XML documents become native objects (Ent)

WebSnap™ components turn Apache™ Web servers into powerful enterprise-class, database-driven Web application servers (Ent)

DataSnap™ provides unlimited and royalty-free Web Services-enabled database middleware development for GUI, Web, and Web Services clients (Ent)

Tools Server for advanced, customizable management

Install and invoke external tools and utilities such as batch files, Perl scripts, compilers, and other systems as part of your build process from the C++ IDE (Pro and Ent)

Design your own build orders, and include customized substitutions for build tools from the C++ IDE (Pro and Ent)

Borland dbExpress™ data-access architecture for fast, native access to your corporate information

dbExpress drivers for Borland InterBase®, MySQL™ and PostgreSQL and Red Hat® Database (Pro and Ent)

dbExpress drivers for DB2®, Informix®, and New! Oracle9i™ and Informix SE (Ent)

Borland enterprise platform development

Native CORBA links to Borland® Enterprise Server – build rich GUI and Web Services clients for EJB™

High performance native Linux® applications

Dual-license (GPL or proprietary) development license for professional software sales

Easily create reusable binary ELF applications and libraries with royalty-free distribution

Use and create dynamically loaded packages for increased application efficiency

Advanced support for Borland InterBase®

InterBase 6.5 five-user development license to build and test multi-user SQL applications

SYSTEM REQUIREMENTS

- Intel® Pentium® II/500 MHz
- 256 MB RAM
- 500 MB hard disk space for full install
- CD-ROM drive
- SVGA or higher resolution monitor
- Mouse or other pointing device

Supported Platforms

Supported platforms are used for internal testing prior to general availability of the product. Use of the product in combination with these platforms is fully supported by Borland.

Supported Linux® distributions:

- Red Hat® Linux 7.2
- Mandrake™ 8.2
- SuSE® Linux 7.3

Certified platforms

Certified platforms have undergone testing that encourages a high degree of confidence. Platform vendors are often actively involved in this process.

Certified Linux distributions:

- Mandrake 9.0

