

INCREASE TEST COVERAGE AND ENSURE APPLICATION ACCURACY THROUGH AUTOMATED REGRESSION, CROSS-PLATFORM AND LOCALIZATION TESTING

Borland® SilkTest® is the leading tool for automating the functional testing process of enterprise software applications via the application Graphical User Interface (GUI). Its powerful test automation capabilities make it the perfect solution for regression, cross-platform and localization testing across a broad set of application technologies including Web, Java or .NET and client/server, within the confines of today's short testing cycles. Designed for realizing automation benefits even when applied to complex test cases, SilkTest provides a host of productivity-boosting features that let you easily cope with changes in the Application Under Test (AUT). Additionally, SilkTest's powerful testing framework enables high reusability of test scripts across test projects, which further increases the achievable ROI. With less time spent on building and maintaining regression testing suites, your QA staff can expand test coverage and optimize application quality.

FEATURES AND BENEFITS

REALIZING THE BENEFITS OF AUTOMATED TESTING

SilkTest delivers the efficiency and productivity benefits of functional test automation while mitigating the classic challenges faced when implementing automated GUI testing, such as lack of time, budget and resources. Successful automation consists of a manageable development effort, reusable and easily maintained test assets, the ability to run the automation whenever and wherever it's needed, and quick and accurate results analysis. SilkTest enables all of these elements to help you realize the benefits of your automated testing efforts. With SilkTest, functional test automation leads to quality and cost advantages:

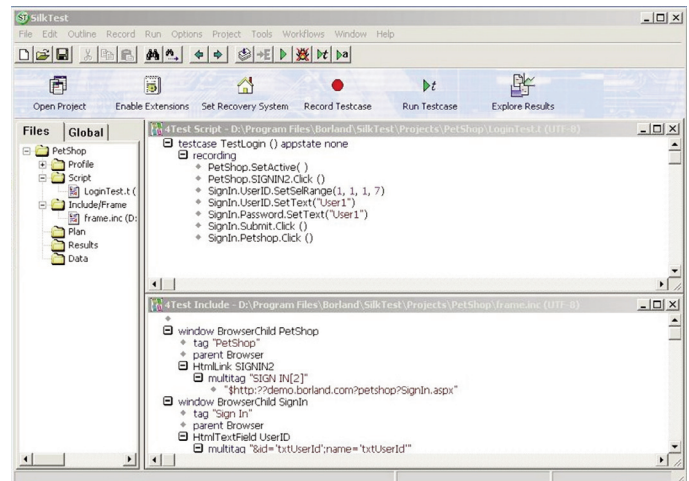
- Higher QA productivity and lower testing costs
- Higher test coverage
- Consistent and repeatable test results
- Ability to create powerful testing frameworks and include Business Analysts in the testing process
- Reduced costs of defects

RAPID AUTOMATION INFRASTRUCTURE DEVELOPMENT

With today's shortened product release cycles, such as the use of Agile iterative cycles, creating enough tests to thoroughly verify your application's reliability can be a daunting task. SilkTest offers many features to promote rapid test development, such as the Basic Workflow for recording tests, the Data Driven Workflow for linking a single test case to test data values stored in an external table, and Code Completion for improved productivity in script creation and automation infrastructure development.

CONTINUOUS PRODUCTIVITY

A critical capability for an automated test solution that is commonly overlooked is the ability to react when systems fail while being tested. SilkTest offers unique features for running tests that includes an out-of-the-box yet extensible Recovery System that allows tests to run unattended 24/7. Should an error occur, such as an application crash, the error is logged and the application is restored to its original base state, so subsequent tests can continue to run and produce valid test results.



Testing an application with Borland SilkTest

EASE OF MAINTENANCE

To meet another classic challenge of test automation - fragile test scripts that break when Applications Under Test (AUT) are modified during development - SilkTest provides a powerful and low-maintenance GUI abstraction layer, which map the graphical elements of the AUT to the lower level test objects SilkTest generates. When an AUT's GUI is modified enough to require updating the GUI map, Project Workspaces help you to quickly identify which GUI map to update. Often the only maintenance needed is modification of the abstraction layer; tests that reference objects defined in the layer can continue to run unmodified. Project Workspaces also facilitate updates to tests when application logic changes. In the Open Agent the ability to dynamically resolve an Object provides another means to create a robust and maintenance friendly framework.

PRECISE SIMULATION OF END-USER EXPERIENCE

SilkTest accesses the AUT exactly as a real user would - through its GUI - resulting in thorough testing of the user experience. To enable tests that span distributed machines, SilkTest employs a separate agent component. As the agent only carries a small footprint, it can be easily deployed on remote machines.

FEATURES AND BENEFITS (CONTINUED)

AGILE OR TRADITIONAL-FAST, ACCURATE AND REPEATABLE TESTING

With SilkTest, developers of scripts have the option of using the powerful and robust proprietary language, 4Test, or using the Eclipse Silk4J plug-in to allow the creation of scripts using Java and the new Open Agent technology. Through Silk4J, developers can create scripts early using a known language and interface, even without a GUI to record against, alongside the development of source code, allowing for paired testing. Scripts can then be integrated to allow for larger scale integrated functional and regression testing, ensuring the absolute functional quality of developed software at the end of each iteration, with rapidly executed scripts. Using Java as a scripting language, existing test capabilities can be expanded to cover custom or third party controls, or even develop integrations to other tools, including Open Source.

INTEGRATION WITH BORLAND SILK™ PRODUCT SUITE

SilkTest offers test development, execution and results reporting across multiple application platforms directly from within its IDE. For analyzing failed test runs, SilkTest uses Borland TrueLog™ technology, which provides visual front-end diagnostics from the end-user perspective for every action of the test script.

In addition, SilkTest offers seamless integration with Borland SilkCentral® Test Manager™ for advanced process-oriented test management, including requirements verification and validation, test planning, test scheduling for unattended executions across various platforms, localizations and configurations, as well as an integration with internal and external defect management software.

KEY FEATURE HIGHLIGHTS

Selected Features

- Recovery System for 24/7 unattended testing
- Basic Workflow for instant productivity
- Data Driven Workflow for testing business logic functionality using externally stored data
- Code Completion for rapid test customization and automation infrastructure development
- Project Workspaces for organizing and sharing test information
- GUI abstraction layer for easy-to-maintain reusable tests and scripts
- Extensible and easy-to-maintain scripting language
- Agent technology for enabling individual tests to span distributed machines
- TrueLog-technology for visual front-end diagnostics of script actions from the end-user perspective
- Integration with Borland SilkCentral Test Manager for advanced, process-oriented test management and issue tracking
- New, next generation Open Agent providing support for Flex/AMF3 and Windows-based applications
- Built-in support for testing Adobe Flex applications using Internet Explorer, Firefox, and the Standalone Flex Player Adobe AIR
- Improved User Interface
- Animated Run Mode to provide 'slow motion' playback of test scripts
- Eclipse plug-in Silk4J with Java as a scripting language
- Dynamic Resolving enables an object to be located without reference to a windows hierarchy

SYSTEM REQUIREMENTS Your computer must meet the hardware requirements listed below:

Platform

- Microsoft® Windows® Windows 2000 (version 5.0, Service Pack 4),
- Microsoft® Windows XP™ (version 5.1, Service Packs 1, 1a, 2), Windows Server 2003 R2 (Service Pack 1), or Windows Vista

Processor

- Intel® Pentium processor running at 1 GHz

RAM

- 1 GB of RAM on a Windows 2000 machine or 1 GB RAM on a Windows XP, 2003, or Vista machine. Add to this the amount of RAM required to run your application under test.

Hard disk space

- 120 MB, 700MB for installation

SUPPORTED ENVIRONMENTS

- | | | | |
|--|--|--|---|
| <ul style="list-style-type: none"> ■ Browser GUIs <ul style="list-style-type: none"> - DHTML (JavaScript and CSS) - XML data (XML/XSL Web pages) - Microsoft HTC/HTA - Java™ Applets ■ Rich Internet Applications <ul style="list-style-type: none"> - Adobe Flex® 2.0 and 3.0 - Adobe AIR™ 3.0 - Adobe Flex 2.0 and 3.0 ■ Web Browser <ul style="list-style-type: none"> - Microsoft® Internet Explorer® 6 and 7 - Mozilla® Firefox® 2.0 - AOL 9 and 9 Security Edition | <ul style="list-style-type: none"> ■ Java GUIs <ul style="list-style-type: none"> - Eclipse 3.0, 3.1, 3.2, 3.3 and 3.4 SWT Standalone and Rich Client Platform (RCP) applications - Java AWT - Java Foundation Classes (JFC, Swing) - Symantec™ Visual Cafe™ ■ Java <ul style="list-style-type: none"> - Sun® JVM 1.4, 1.5, 1.6 (Playback on Linux®, Solaris and HP-UX® via SilkBean) - IBM® JVM 1.5 | <ul style="list-style-type: none"> ■ .NET GUIs <ul style="list-style-type: none"> - Microsoft .NET WinForms - Infragistics® NetAdvantage™ WinForms (in Forms UltraWinGrid and UltraWin Toolbar controls) 5.2, 5.3 and 6.1, 6.2, 6.3, 7.3 ■ .NET <ul style="list-style-type: none"> - Microsoft .NET CLR 1.x, 2.0 (3.x for WPF only) ■ Native GUIs <ul style="list-style-type: none"> - VisualBasic 6/Active X - PowerBuilder® 9.0, 10.0, 10.2 and 10.5 and 11.0 | <ul style="list-style-type: none"> - Adobe AIR 3.0 - Win32, MFC - Custom GUI objects via SilkTest Extension Kit ■ Internationalisation <ul style="list-style-type: none"> - Full Unicode enabled (excluding PowerBuilder, Motif and SilkBean) |
|--|--|--|---|

Borland is the leading vendor of Open Application Lifecycle Management (ALM) solutions - open to customers' processes, tools and platforms - providing the flexibility to manage, measure and improve the software delivery process.